



EGE YALITIM

SİSTEMLERİ SANAYİ VE TİCARET LİMİTED ŞİRKETİ

PRODUCT CATALOGUE

Insulation Products | **Flexible** Air Ducts | **Auxiliary** Products



CUSTOMER FOCUSED. INNOVATION FOCUSED. VALUE BASED.

OUR FINAL GOAL – PROTECT NATURE, IMPROVE PROCESSES

OUR MISSION

- Quality of life, health and safety
- Respect and responsibility for people and the environment
- Sustainable conservation of natural resources
- Combining economic efficiency with social responsibility
- To continuously strive to make our customers successful in a more economical and sustainable way with customer-specific products and insulation solutions

OUR VISION

- A complete service portfolio of products, system solutions and service packages
- Convincing professional and consulting expertise
- Deep knowledge of many industries and applications
- Over 25 years of knowledge and experience in the insulation industry

INDEX

INSULATION PRODUCTS

RUBBER INSULATION PAGE. 4	Standard rubber sheet	4
	Adhesive rubber sheet	4
	Aluminium-foiled rubber sheet	5
	Adhesive and aluminium-foiled rubber sheet	5
	Aluguard-coated rubber sheet	6
	Perforated U-profile	
	Rubber pipes	7

ROCKWOOL INSULATION PAGE. 8	Rock wool industrial mattress	8
	Rock wool air conditioning sheet	9
	Rock wool roofing mattress	9
	Rock wool partition sheet	10
	Rock wool prefabricated pipe	11

GLASS WOOL INSULATION PAGE. 13	Glass wool air conditioning sheet	13
	Glass wool air conditioning mattress	14
	Glass wool roofing mattress	15
	Glass wool prefabricated pipe	16

ACOUSTIC INSULATION PAGE. 17	Acoustic NFAF foam	17
	Pyramid NFAF foam	17

CERAMIC WOOL PAGE. 18		18
--	--	----

DANMAT PVC COATING PAGE. 19		19
--	--	----

FLEXIBLE AIR DUCTS

PAGE. 19	Flexible air ducts, 250 f series	19
	Flexible air ducts, alu 70 series	19
	Flexible air ducts, combi series	19
	Flexible air ducts, hygiene series	20
	Reinforced flexible PVC air ducts	20
	Flexible air ducts, poly series	20
	Semi-flexible air ducts	21
	Stainless flexible air ducts	21

DIFFUSERS

PAGE. 22

DUCT FITTINGS

PAGE. 22	Duct flanges	22
	Corner fittings	22
	G Clips	23
	Perforated L-profile	23
	Perforated U-profile	23
	Perforated C-profile	23
	Rod	23
	Nut / Bolt	23

FAN PRODUCTS

PAGE. 24	Round duct fans	24
	Rectangular duct fans	24
	Cellular fans	25
	Snail fans	25
	Axial fans	25
	Domestic (WC-bathroom) fans	26
	Speed switches	26

AUXILIARY PRODUCTS

PAGE. 26	Contact adhesive	26
	Aluminium tapes	27
	PVC tapes	28
	Rubber tapes	28
	Gasket	28
	Mastic sealant	28
	Silicone	29
	Plastic clamps	29

RUBBER INSULATION

STANDARD RUBBER SHEET



- ✓ It is applied for thermal insulation and condensation control on the outer surfaces of ducts and large diameter pipelines in heating, cooling, ventilation and air conditioning systems.
- ✓ It is produced in 6 mm, 9mm, 13 mm, 19 mm, 25 mm, 32 mm and 50 mm wall thicknesses.
- ✓ It is adhered to the duct surface to be applied by using special adhesive.
- ✓ All joints should be glued in a way to ensure impermeability, and if necessary, they should be sealed with insulation tape after gluing.
- ✓ The application must be protected against puncturing and tearing. In applications exposed to sunlight, a protective jacket or protective paint must be used against UV effect.

ADHESIVE RUBBER SHEET



- ✓ It is applied for thermal insulation and condensation control on the outer surfaces of ducts and large diameter pipelines in heating, cooling, ventilation and air conditioning systems. Thanks to its mesh adhesive tape, it does not require the use of contact adhesive.
- ✓ It is produced in 6 mm, 9 mm, 13 mm, 19 mm, 25mm, 32 mm and 50 mm wall thicknesses.
- ✓ It saves time and labour thanks to its adhesive tape.
- ✓ All joints should be glued in a way to ensure impermeability, and if necessary, they should be sealed with insulation tape after gluing.
- ✓ The application must be protected against puncturing and tearing. In applications exposed to sunlight, a protective jacket or protective paint must be used against UV effect.

RUBBER INSULATION

ALUMINIUM-FOILED RUBBER SHEET



- ✓ It is applied for thermal insulation and condensation control on the outer surfaces of ducts and large diameter pipelines in heating, cooling, ventilation and air conditioning systems. Thanks to the aluminium foil coating on the outer surface, it provides insulation protection against high heat, flame, impact and sun rays and increases vapour diffusion resistance.
- ✓ It is produced in 6 mm, 9 mm, 13 mm, 19 mm, 25 mm, 32 mm and 50 mm wall thicknesses.
- ✓ All joints should be glued in a way to ensure impermeability, and if necessary, they should be sealed with aluminium foil insulation tape after gluing.

ADHESIVE AND ALUMINIUM-FOILED RUBBER SHEET



- ✓ It is applied for thermal insulation and condensation control on the outer surfaces of ducts and large diameter pipelines in heating, cooling, ventilation and air conditioning systems.
- ✓ Thanks to the aluminium foil coating on the outer surface, it provides insulation protection against high heat, flame, impact and sun rays and increases vapour diffusion resistance. Thanks to its mesh adhesive tape, it allows easy, fast and clean bonding to surfaces. It saves time and labour.
- ✓ It is produced in 6 mm, 9 mm, 13 mm, 19 mm, 25 mm, 32 mm and 50 mm wall thicknesses.
- ✓ All joints should be glued in a way to ensure impermeability, and if necessary, they should be sealed with aluminium foil insulation tape after gluing.

RUBBER INSULATION

ALUGUARD-COATED RUBBER SHEET



- ✓ It is applied for thermal insulation and condensation control on the outer surfaces of ducts and large diameter pipelines in heating, cooling, ventilation and air conditioning systems. Thanks to the reinforced hard PVC-supported aluminium foil coating on the outer surface, it provides insulation protection against high heat, flame, impact and sun rays, and can be used instead of sheet coating. It increases vapour diffusion resistance.
- ✓ It is produced in 6mm, 9mm, 13mm, 19mm, 25mm, 32mm and 50mm wall thicknesses.
- ✓ All joints should be glued in a way to ensure impermeability, and if necessary, they should be sealed with thick-micron aluminium foil insulation tape after gluing.

Package quantities of rubber sheet (standard sheet/ adhesive sheet / aluminium-foiled sheet / -aluminium-foiled and adhesive sheet):

THICKNESS mm	WIDTH (1000mm) sqm/Roll	WIDTH (1200mm) sqm/Roll
6	30	36
9	20	24
13	14	16,8
19	10	12
25	8	9,6
32	6	7,2
50	4	4,8

RUBBER INSULATION

RUBBER PIPES



- ✓ It is applied for thermal insulation and condensation control on the outer surfaces of pipelines in heating, cooling, ventilation and air conditioning systems.
- ✓ The pipe to be insulated and the rubber inner surface should fit perfectly, there should be no gap between them. Joints should be glued with PVC tape to ensure impermeability.
- ✓ The application must be protected against puncturing and tearing. In applications exposed to sunlight, a protective jacket or protective paint must be used against UV effect.

Conversion table of equivalent sheet quantity for large-diameter pipes

Pipe diameter		Pipe wall thickness							
Inch	mm	6mm	9mm	13mm	19mm	25mm	32mm	40mm	50mm
4"	114	0,38	0,39	0,40	0,42	0,44	0,46	0,49	0,52
5"	140	0,46	0,47	0,48	0,50	0,52	0,54	0,57	0,60
6"	169	0,84	0,55	0,56	0,58	0,60	0,62	0,64	0,68
8"	219	0,71	0,72	0,73	0,75	0,77	0,79	0,82	0,85
10"	273	0,88	0,89	0,91	0,92	0,94	0,96	0,99	1,02
12"	323	1,04	1,05	1,06	1,08	1,10	1,12	1,15	1,18
14"	398	1,13	1,14	1,16	1,18	1,19	1,22	1,24	1,27

Units of measurement for pipe diameters

inch	DN	Metric (mm)	inch	DN	Metric (mm)	inch	DN	Metric (mm)
5/8"	-	15	21/2"	DN65	76	12"	DN300	323
1/2"	DN15	22	3"	DN80	89	14"	DN350	398
3/4"	DN20	28	4"	DN100	114	16"	DN400	406
1"	DN25	35	5"	DN125	140	18"	DN450	467
1 1/4"	DN32	42	6"	DN150	169	20"	DN500	508
1 1/2"	DN40	48	8"	DN200	219	24"	DN600	610
2"	DN50	60	10"	DN250	273	28"	DN700	761

ROCKWOOL INSULATION

ROCK WOOL INDUSTRIAL MATTRESS (RABITZ WIRE MATTRESS)

☑ Bare and aluminium foiled rock wool mattress. It is offered to the market in roll shrink packaging.

☑ It provides heat, sound and fire insulation of industrial ovens and similar places exposed to high temperatures. It is attached to the surface to be insulated by means of fixing pins. When necessary, the surface of the rock wool mattress is covered with sheet metal. Rabitz can also be applied with wires.



TYPE 750

Thickness mm	Width mm	Length mm	Package/sqm
30	1000	8000	8
40	1000	6000	6
50	1000	5000	5
60	1000	4000	4
80	1000	3000	3
100	1000	3000	3

TYPE 700

Thickness mm	Width mm	Length mm	Package/sqm
30	1000	8000	8
40	1000	8000	8
50	1000	5000	5
60	1000	5000	5
80	1000	3000	3
100	1000	3000	3
120	1000	3000	3

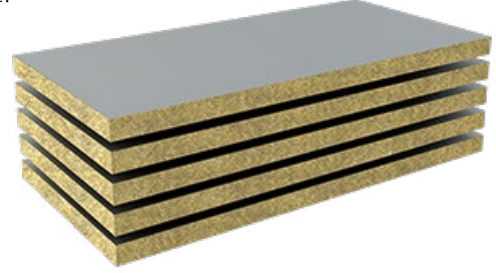
TYPE 650

Thickness mm	Width mm	Length mm	Package/sqm
30	1000	8000	8
40	1000	8000	8
50	1000	5000	5
60	1000	5000	5
80	1000	3000	3
100	1000	3000	3
120	1000	3000	3

ROCKWOOL INSULATION

ROCK WOOL AIR CONDITIONING SHEET

- ✓ It is a rock wool sheet covered with aluminium foil on one side. It is offered to the market in shrink packaging.
- ✓ **Areas of Use**
It is used in air conditioning ducts and ventilation ducts.
- ✓ **Application**
It is attached to the application areas with pins.



Dimensions of aluminium foiled rock wool air conditioning sheet

Thickness mm	Width mm	Length mm
25	600	1200
30	600	1200
40	600	1200
50	600	1200
80	600	1200

ROCK WOOL ROOFING MATTRESS

- ✓ It is a bare roofing mattress covered with aluminium foil on one or both sides. It is offered to the market in roll shrink packages.
- ✓ **Areas of Use**
It is used on roof surfaces and between purlins.
- ✓ **Application**
It is applied by laying method at various densities depending on the purlin spacing.



40 KG/Cubic Meter

Thickness mm	Dimension mm	Kg/sqm	Package/sqm	Piece/Package
80	1200*5000		6	1
100	1200*5000		6	1

50 KG/Cubic Meter

Thickness mm	Dimension mm	Kg/sqm	Package/sqm	Piece/Package
80	1200*5000		6	1
100	1200*5000		6	1

ROCKWOOL INSULATION

ROCK WOOL PARTITION SHEET

✓ It is an uncoated rock wool plate. It is released to the market in shrink packages.

✓ **Areas of Use**

- In lifts and stairwells, · On partition walls,
- On neighbouring walls.

✓ **Application**

It provides heat, sound and fire insulation by being placed between load-bearing constructions and partition walls.



DIMENSIONS AND PACKAGE QUANTITIES OF ROCK WOOL PARTITION SHEET

40 KG/Cubic Meter

Thickness mm	Dimension mm	kg/m ²	Package/sqm	Piece/Package
50	600*1200	2	5,76	8
60	600*1200	2,4	5,76	8
70	600*1200	2,8	4,32	6
80	600*1200	3,2	4,32	6
90	600*1200	3,6	2,88	4
100	600*1200	4	2,88	4
120	600*1200	4,8	2,16	3

50 KG/Cubic Meter

Thickness mm	Dimension mm	kg/m ²	Package/sqm	Piece/Package
40	600*1200	2	7,2	10
50	600*1200	2,5	5,76	8
60	600*1200	3	5,76	8
70	600*1200	3,5	4,32	6
80	600*1200	4	4,32	6
90	600*1200	4,5	2,88	4
100	600*1200	5	2,88	4
120	600*1200	6	2,16	3

ROCKWOOL INSULATION

ROCK WOOL PREFABRICATED PIPE

- ✓ It is a bare or aluminium foiled rock wool pipe used in mechanical installation insulation. It is offered to the market in cardboard packages.
- ✓ **Areas of Use**
It is used for heat saving and fire insulation in high temperature industrial and installation pipes. It is used in sound vibration insulation in process equipment.
- ✓ **Application**
Depending on the area of use, it is applied bare or covered with aluminium foil. After the bare prefabricated pipe coating, the joints are fixed by screws, rivets, clamping or gluing, and in the case of aluminium foil, by means of special tape.



Dimensions and package quantities of rock wool prefabricated pipe

Rated diameter (inch)	Inner diameter (mm)	Wall Thickness (mm)	Height (mm)	Packaging Unit	m/ Packaging Quantity	Rated diameter (inch)	Inner diameter (mm)	Wall Thickness (mm)	Height (mm)	Packaging Unit	m/ Packaging Quantity
¼"	13	25	1200	Box	86, 4	½"	21	30	1200	Box	48
½"	21	25	1200	Box	64, 8	¾"	27	30	1200	Box	43, 2
¾"	27	25	1200	Box	60	1"	33	30	1200	Box	38, 4
1"	33	25	1200	Box	48	1 ¼"	42	30	1200	Box	28, 8
1 ¼"	42	25	1200	Box	38, 4	1 ½"	48	30	1200	Box	27, 6
1 ½"	48	25	1200	Box	33, 6	2"	60	30	1200	Box	21, 6
2"	60	25	1200	Box	27, 6	2 ½"	76	30	1200	Box	18
2 ½"	76	25	1200	Box	18	3"	89	30	1200	Box	14, 4
3"	89	25	1200	Box	16, 8	4"	114	30	1200	Box	9, 6
4"	114	25	1200	Box	10, 8	5"	140	30	1200	Box	7, 2
						6"	169	30	1200	Box	6
						8"	219	30	1200	Box	2, 4

Rated diameter (inch)	Inner diameter (mm)	Wall Thickness (mm)	Height (mm)	Packaging Unit	m/ Packaging Quantity	Rated diameter (inch)	Inner diameter (mm)	Wall Thickness (mm)	Height (mm)	Packaging Unit	m/ Packaging Quantity
½"	21	40	1200	Box	28, 8	½"	21	50	1200	Box	21, 6
¾"	27	40	1200	Box	27, 6	¾"	27	50	1200	Box	18
1"	33	40	1200	Box	25, 2	1"	33	50	1200	Box	18
1 ¼"	42	40	1200	Box	21, 6	1 ¼"	42	50	1200	Box	16, 8
1 ½"	48	40	1200	Box	18	1 ½"	48	50	1200	Box	14, 4
2"	60	40	1200	Box	16, 8	2"	60	50	1200	Box	13, 2
2 ½"	76	40	1200	Box	13, 2	2 ½"	76	50	1200	Box	9, 6
3"	89	40	1200	Box	9, 6	3"	89	50	1200	Box	7, 2
4"	114	40	1200	Box	7, 2	4"	114	50	1200	Box	7, 2
5"	140	40	1200	Box	6	5"	140	50	1200	Box	4, 8
6"	169	40	1200	Box	3, 6	6"	169	50	1200	Box	1, 2
8"	219	40	1200	Box	1, 2	8"	219	50	1200	Box	2, 4
10"	273	40	1200	Box	1, 2	10"	273	50	1200	Box	1, 2
12"	324	40	1200	Box	1, 2	12"	324	50	1200	Box	1, 2
14"	354	40	1200	Box	1, 2	14"	354	50	1200	Box	1, 2

ROCKWOOL INSULATION

ROCK WOOL PREFABRICATED PIPE

DIMENSIONS AND PACKAGE QUANTITIES OF ROCK WOOL PREFABRICATED PIPE

Rated diameter (inch)	Inner diameter (mm)	Wall Thickness (mm)	Height (mm)	Packaging Unit	m/ Packaging Quantity	Rated diameter (inch)	Inner diameter (mm)	Wall Thickness (mm)	Height (mm)	Packaging Unit	m/ Packaging Quantity
½"	21	60	1200	Box	14, 4	2"	60	80	1200	Box	6
¾"	27	60	1200	Box	14, 4	2 1/2"	76	80	1200	Box	4, 8
1"	33	60	1200	Box	13, 2	3"	89	80	1200	Box	3, 6
1 1/4"	42	60	1200	Box	10, 8	4"	114	80	1200	Box	1, 2
1 1/2"	48	60	1200	Box	9, 6	5"	140	80	1200	Box	1, 2
2"	60	60	1200	Box	8, 4	6"	169	80	1200	Box	1, 2
2 1/2"	76	60	1200	Box	7, 2	8"	219	80	1200	Box	1, 2
3"	89	60	1200	Box	7, 2	10"	273	80	1200	Box	1, 2
4"	114	60	1200	Box	4, 8	12"	324	80	1200	Box	1, 2
5"	140	60	1200	Box	3, 6	14"	354	80	1200	Box	1, 2
6"	169	60	1200	Box	1, 2						
8"	219	60	1200	Box	2, 4						
10"	273	60	1200	Box	1, 2						
12"	324	60	1200	Box	1, 2						
14"	354	60	1200	Box	1, 2						

Rated diameter (inch)	Inner diameter (mm)	Wall Thickness (mm)	Height (mm)	Packaging Unit	m/ Packaging Quantity
4"	114	100	1200	Box	2, 4
5"	140	100	1200	Box	2, 4
6"	169	100	1200	Box	1, 2
8"	219	100	1200	Box	1, 2
10"	273	100	1200	Box	1, 2

GLASS WOOL INSULATION

GLASS WOOL AIR CONDITIONING SHEET

- ✓ Depending on the purpose of the application, it is manufactured as uncoated, aluminium foiled or fibreglass coated air conditioning sheets.
- ✓ In external thermal insulation applications of ducts, if cold duct insulation is to be made, aluminium foiled sheets must be used against the risk of condensation.
- ✓ The sheets are applied with the aluminium foiled surface facing outwards, by passing them to the pins (5-6 pcs/sqm) fixed outside the duct.
- ✓ The joints of the sheets are carefully glued with self-adhesive aluminium foil tape so that they are airtight.
- ✓ In cases where both heat and sound insulation is required in the ducts, the application of air conditioning sheets covered with fibreglass from the inside should be preferred. In this case, the sheets are applied by passing them to the pins fixed on the inner surface of the duct with the fibreglass coated side facing inwards.



DIMENSIONS OF GLASS WOOL AIR CONDITIONING SHEET

THICKNESS mm	WIDTH mm	LENGTH mm
20	600	1200
25	600	1200
30	600	1200
40	600	1200
50	600	5000

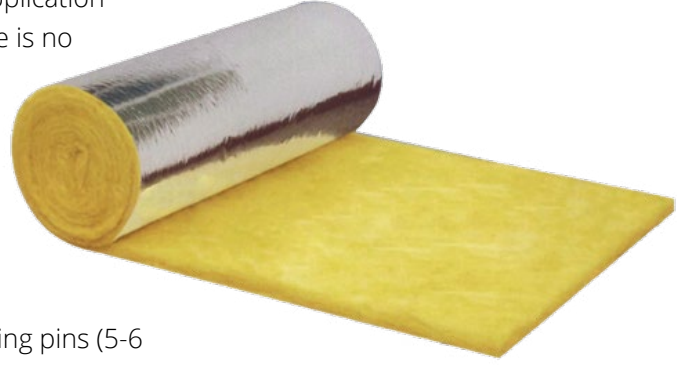
DIMENSIONS AND PACKAGE QUANTITIES OF ALUMINIUM FOILED GLASS WOOL AIR CONDITIONING SHEET

THICKNESS mm	WIDTH mm	LENGTH mm	PACKAGE QUANTITY/sqm
25	600	1200	11, 52
50	600	1200	5, 76

GLASS WOOL INSULATION

GLASS WOOL AIR CONDITIONING MATTRESS

- ✓ Before applying the Air Conditioning Mattress, the application surfaces of the ducts should be cleaned so that there is no dust or oil.
- ✓ Self-adhesive special fixing pins ensure fast and easy application. The cutting shape of the air conditioning mattresses differs according to the form of the duct to be applied.
- ✓ After the mattresses are cut, self-adhesive special fixing pins (5-6 pcs/sqm) are fixed to the outer surface of the duct.
- ✓ Then the mattresses are threaded onto the pins and pin washers are attached. The overlaps at the joints of the mattresses are fixed to each other by gluing, stapling or self-adhesive aluminium foil tape.



DIMENSIONS AND PACKAGE QUANTITIES OF GLASS WOOL AIR CONDITIONING MATTRESS

THICKNESS mm	WIDTH mm	LENGTH mm	PACKAGE/sqm
25	1100	20000	22
50	1100	10000	11

GLASS WOOL INSULATION

GLASS WOOL ROOFING MATTRESS

- ☑ Glass wool roofing mattress is used on the slab in unused attics, between rafters in used attics, in horizontal applications with no load on it, on metal and sandwich roofs.
- ☑ After the application, no load should be placed on the material and the material should not be walked on.



DIMENSIONS OF GLASS WOOL ROOFING MATTRESS

TYPE 300

THICKNESS mm	WIDTH mm	LENGTH mm
80	1200	7500
100	1200	6000
120	1200	6000
140	1200	6000
160	1200	5000

TYPE 350

THICKNESS mm	WIDTH mm	LENGTH mm
80	1200	10000
100	1200	8000
120	1200	6000
140	1200	6000
160	1200	5000

TYPE 400

THICKNESS mm	WIDTH mm	LENGTH mm
100	1200	8000
120	1200	6000
140	1200	6000
140	1200	6000
160	1200	5000

GLASS WOOL PREFABRICATED PIPE

- ✓ They are uncoated or aluminium foiled pipes made of glass wool with high unit weight and are used for thermal insulation of industrial pipes, heating, central heating and solar energy installations, for insulation of pipes against sweating or freezing, as well as against vibration and noise in pressurised water pipes.
- ✓ A Glass Wool Prefabricated Pipe suitable for the nominal diameter of the line to be applied is selected. It is placed by opening from the cutting place. The application should be completed so that there is no gap at the joints.



DIMENSIONS AND PACKAGE QUANTITIES OF GLASS WOOL PIPE

PIPE INNER DIAMETER / inch-mm	25mm m/box	30mm m/ box	40mm m/ box	50mm m/ box	60mm m/ box	80mm m/ box	100mm m/ box
¼"-13mm	45,6	36	20,4	16,8			
½"-21mm	40,8	33,6	19,2	14,4	12		
¾"-27mm	36	27,6	18	12	10,8		
1"-33mm	30	24	16,8	12	8,4		
1 ¼"-42mm	26,4	18	13,2	10,8	8,4		
1 ½"-48mm	22,8	18	13,2	10,8	7,2		
57mm	18	14,4	12	8,4	7,2		
2"-60mm	16,8	14,4	10,8	8,4	7,2	4,8	
63mm	15,6	13,2	10,8	8,4	7,2	4,8	
70mm	14,4	12	10,8	7,2	6	3,6	
2 ½"-76mm	14,4	12	8,4	7,2	6	3,6	3,6
83mm	12	10,8	8,4	4,8	4,8	3,6	2,4
3"-89mm	10,8	9,6	7,2	6	4,8	3,6	2,4
102mm	9,6	8,4	6	4,8	3,6	2,4	2,4
108mm	8,4	7,2	6	4,8	3,6	2,4	2,4
4"-114mm		6	4,8	4,8	3,6	2,4	2,4
127mm		12	12	7,2	7,2	4,8	2,4
133mm		12	8,4	7,2	4,8	4,8	3,6
5"-140mm		12	8,4	7,2	4,8	4,8	3,6
159mm		9,6	7,2	6	4,8	4,8	3,6
6"-169mm		9,6	7,2	6	4,8	4,8	3,6
193mm		7,2	6	4,8	4,8	3,6	2,4
8"-219mm		6	4,8	4,8	3,6	3,6	2,4
244mm		4,8	3,6	3,6	2,4	2,4	2,4
10"-273mm		4,8	3,6	3,6	2,4	2,4	
12"-324mm		3,6	2,4	2,4	2,4	2,4	
14"-356mm		2,4	2,4	2,4	1,2		

ACOUSTIC INSULATION



Acoustic NFAF foam

- ✓ It is a high performance acoustic foam with excellent sound absorption values with its flame retardant structure against combustion. This product with very good sound absorption performance is not subject to any abrasion even at high air speeds. It does not spread as particles in the air. Fireproof acoustic foams, which operate at maximum performance in the medium and high frequency range, show high performance in acoustic regulation and insulation of sound with the addition of materials such as lead & pvc barrier. The chemicals in its content do not contain harmful waste and do not emit toxic gas as a result of combustion.

Acoustic pyramid foam

- ✓ Their acoustic performance is increased by transforming their surface structures into egg, pyramid, labyrinth forms. They are used for acoustic regulation in all environments containing noise, in generator rooms, compressor cabins, industrial machinery cabins, ventilation ducts as sound absorbers.

DIMENSIONS AND PACKAGE QUANTITIES OF ACOUSTIC NFAF FOAMS

Wall Thickness (mm)	Width (mm)	Length (mm)	Sqm/Roll
5	1000	30000	30
6	1000	30000	30
10	1000	20000	20
15	1000	15000	15
20	1000	10000	10
25	1000	10000	10
30	1000	10000	10
50	1000	6000	6

CERAMIC WOOL

✓ Ceramic wool is used in industrial furnace insulation, insulation of boiler pipes and chimneys, all kinds of technical insulation requiring high temperature.

✓ It is included in insulation groups such as thermal insulation, fire insulation, sound insulation and moisture insulation.

DIMENSIONS AND PACK QUANTITIES OF CERAMIC WOOL

PRODUCT NAME	THICKNESS	Kg/Sqm	WIDTH mm	LENGTH mm	Sqm/Box	MAIN UNIT
CERAMIC WOOL 1260 HP - Blanket						
Ceramic Wool 96 kg/cu m	25	2,4	610	7200	4,392	Box
	50	4,8	610	3600	2,196	Box
Ceramic Wool 110 kg/cu m	13	1,43	610	14400	8,784	Box
Ceramic Wool 128 kg/cu m	13	1,66	610	14400	8,784	Box
	25	3,2	610	7200	4,392	Box
	50	6,4	610	3600	2,196	Box

PRODUCT NAME	PRODUCT DIMENSIONS	PACKAGING INFORMATION
Ceramic Wool Fibre 1260	In Bulk	Pallet 630-670 kg/pallet

PRODUCT NAME	PRODUCT DIMENSIONS				PACKAGING INFORMATION			
CERAMIC WOOL 1430 WITH ZIRCON- Blanket	THICKNESS mm	Kg/Sqm	WIDTH mm	LENGTH mm	PACKAGING UNIT	BOX/PALLET	Sqm/Box	MAIN UNIT
Ceramic Wool 128 kg/cu m	13	1,66	610	14400	Pallet	24	8,784	Box
	25	3,2	610	7200	Pallet	24	4,392	Box
	50	6,4	610	3600	Pallet	24	2,196	Box

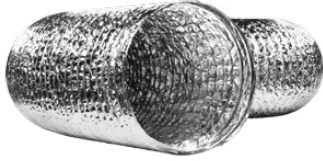


DANMAT PVC COATING



- ✓ With DANMAT PVC Insulation Coating System, which is designed for interior spaces, you can cover your open offices or mechanical rooms and get an aesthetic and spacious solution. Available in light grey, white and matt black colour options. All materials in the components of the system do not reflect light and are matt coloured, so you will have an eye-friendly atmosphere in the office environment.
- ✓ Elbow, tee, flange and pipe clamp coating materials used in the system are produced ready-to-use. The area required when installing the coating system is the size of a small table. Ready-to-use parts provide fast and practical assembly.

FLEXIBLE AIR DUCTS



FLEXIBLE AIR DUCTS, 250 F SERIES

- ✓ Suitable for ventilation and air conditioning systems operating at low and medium pressure. Non-insulated, heat insulated and sound insulated are produced.
- ✓ It has aluminium inner and outer surface.
- ✓ M0 certified according to French national fire reaction standards. Class A2 certified flexible air duct according to European fire reaction standards.
- ✓ Manufactured in range of Ø82-Ø800 mm, in 10 metre lengths.



FLEXIBLE AIR DUCTS, ALU 70 SERIES

- ✓ Suitable for ventilation and air conditioning systems operating at low and medium pressure. Manufactured as non-insulated, heat insulated and sound insulated.
- ✓ It has aluminium inner and outer surface.
- ✓ M1 certified according to French national fire reaction standards. Class B according to European fire reaction standards.
- ✓ Manufactured in range of Ø52-Ø800 mm, in 10 metre lengths.



FLEXIBLE AIR DUCTS, COMBI SERIES

- ✓ Suitable for ventilation and air conditioning systems operating at low and medium pressure.
- ✓ Non-insulated. Black flexible air duct with PVC outer surface. Flexible air duct insulated against heat and humidity.
- ✓ Manufactured in range of Ø52-Ø800 mm, in 10 metre lengths.

FLEXIBLE AIR DUCTS



FLEXIBLE AIR DUCTS, HYGIENE SERIES

- ✓ Suitable for ventilation and air conditioning systems operating at low and medium pressure. Manufactured as non-insulated, heat insulated and sound insulated.
- ✓ It has a hygiene-coated aluminium inner surface and aluminium outer surface.
- ✓ Certified anti-bacterial performance.
- ✓ Certified anti-fungal performance.
- ✓ Manufactured in range of Ø102-Ø800 mm, in 10 metre lengths.



REINFORCED FLEXIBLE PVC AIR DUCTS

- ✓ Reinforced PVC flexible air ducts are multi-purpose, non-insulated and heat insulated air ducts specially designed for heating, cooling, ventilation and air conditioning systems operating at low and medium pressure.
- ✓ Manufactured in range of Ø52-Ø800 mm, in 10 metre lengths.



FLEXIBLE AIR DUCTS, POLY SERIES

- ✓ Non-insulated and heat insulated polyester flexible air duct developed for ventilation and air conditioning systems operating at low and medium pressure.
- ✓ It is produced by reinforcing multi-layer laminated polyester material with high tensile helix steel wire.
- ✓ POLYAFS flexible air ducts are leak-proof.
- ✓ It has extremely high flexing, bending and compressibility. Easy to install in oval, round and corner joints.
- ✓ Manufactured in range of Ø82-Ø800 mm, in 7,6 metre lengths.

FLEXIBLE AIR DUCTS



SEMI-FLEXIBLE AIR DUCTS

- ✓ Semi-flexible air ducts made of 90 micron thick corrugated aluminium. Manufactured to be mounted on boiler chimney outlets.
- ✓ It does not burn up to 250°C.
- ✓ Manufactured in range of Ø82-Ø800 mm, in length of 1,5 - 3 and 6 m.



STAINLESS FLEXIBLE AIR DUCTS

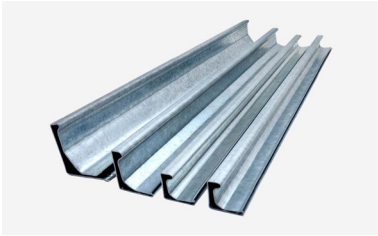
- ✓ Stainless steel semi-flexible air ducts are multi-purpose semi-flexible air ducts specially designed for extremely hot air transfer systems operating at high pressure and especially for applications where high mechanical strength is required.
- ✓ It has the ability to bend, curl and stretch.
- ✓ The clamp system used in stainless steel semi-flexible air ducts is "INTERLOCK", i.e. double clamp system.
- ✓ No separation and/or deformation occurs in the stainless steel strips.

DIFFUSERS

- ✓ Specially designed for low and medium pressure heating, cooling, ventilation and air conditioning systems, can be used for both blowing and suction purposes. Thanks to its aerodynamic design, it offers very low pressure loss value. Made of both metal and ABS plastic. Thanks to its high surface quality, it adapts aesthetically to every environment. Thanks to its integrated structure, air leaks between parts are eliminated. Thanks to its mounting collar, it offers easy assembly in 1 minute.
- ✓ Manufactured in the range of Ø100 to Ø250 mm.



DUCT FITTINGS



DUCT FLANGES

- ✓ Flanges made of galvanized and stainless steel sheet are used for interlocking ventilation ducts.
- ✓ In terms of providing sealing, those that are filled with mastic should be preferred.
- ✓ Sheet thickness starts from 0,50 mm. Dimensions vary as 20mm-25mm-30mm-35mm and 40mm.



CORNER FITTINGS

- ✓ It is manufactured from galvanized and stainless steel sheet for the purpose of connecting the duct flanges to each other.
- ✓ The corners provide a rigid and strong hold with their unique locking systems.
- ✓ Flange and corner must be compatible with each other. Like duct flanges, it has dimensions as 20mm-25mm-30mm-35mm and 40mm.

DUCT FITTINGS



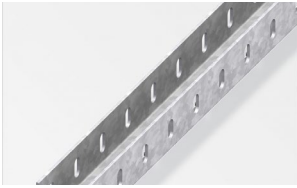
G CLIPS

- ✓ Coatings are made of galvanised sheet metal.
- ✓ It is used in combination with bolts to connect the duct flanges together.
- ✓ It is produced in G or C form, in the shape of a hook.



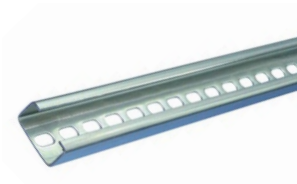
PERFORATED L PROFILE

- ✓ It is used as a multi-purpose hanger, transport and fixing element.
- ✓ It is manufactured in L form, from perforated sheet metal and in thicknesses of 2mm, 2.5mm, 3mm, 4mm and 5mm.
- ✓ It is manufactured in lengths of 2 m - 2,5 m - 3 m and 4 m.



PERFORATED U PROFILE

- ✓ It is used as a multi-purpose hanger, transport and fixing element.
- ✓ It is manufactured in U form, from perforated sheet metal and in thicknesses of 2mm, 2.5mm, 3mm, 4mm and 5mm.
- ✓ It is manufactured in lengths of 2 m - 2,5 m - 3 m and 4 m.



PERFORATED C PROFILE

- ✓ It is used as a multi-purpose hanger, transport and fixing element.
- ✓ It is manufactured in C or G form, from perforated sheet metal and in thicknesses of 1.5mm and 2mm.
- ✓ It is manufactured in lengths of 2 m and 4 m.



ROT (THREADED ROD)

- ✓ It is used for attaching suspension elements to the duct or ceiling and for fixing the ducts in the ceiling.
- ✓ It is made of galvanised sheet metal in sizes of M8, M10 and M12.
- ✓ It is generally used in lengths of 1 m and 2 m.



NUT/WASHER/BOLT

- ✓ They are fasteners used for fixing hanger elements, clips and flanges to each other in ventilation ducts.
- ✓ M8, M10 and M12 sizes are standard sizes of nuts and washers. Bolts are manufactured as 8*20 and 8*25.

FAN PRODUCTS



ROUND DUCT FANS

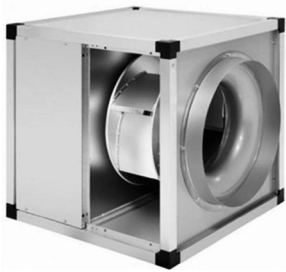
- ✓ The housing and blades of round duct type radial fans are made of high quality galvanised steel. The fans have backward curved sparse blades and the fan bodies are highly resistant to corrosion. There are 13 different models in the series offering flow rates between 290 - 3.380 m³/s and connection diameter options between Ø100 - 400 mm.
- ✓ Another model is plastic round duct type mixed flow fans and the models of these fans categorised between 160 - 800 are made of plastic material and the models categorised between 1000 and 6000 are made of epoxy polyester painted steel sheet.
- ✓ There are 9 different models offering flow rates between 180 - 5.500 m³/s and connection diameter options between Ø100 - 400 mm. - Time adjustable models are available. Time adjustment can be made in the range of 1-30 minutes. In timed models, the motors are single speed and are not suitable for speed control. Fans of the series have a wide range of solution options for ventilation applications in residential, commercial spaces, etc.



RECTANGULAR DUCT FANS

- ✓ The body and blades of rectangular duct type radial fans are made of galvanised steel sheet. The fans have forward inclined frequent radial blades and thanks to the intervention cover, the motor and blade section can be intervened without removing the duct connection. - There are 12 different models in the series with flow rates between 1.090 - 10.850 m³/s and duct connection opening sizes between 400×200 - 1000×500 mm.

FAN PRODUCTS



CELLULAR FANS

- ✓ Direct-coupled cellular fans have backward-curved, sparse and radial blades.
- ✓ Fan cells made of galvanised steel sheet have double walls, 17 mm thick glass wool acoustic insulation and M0 non-flammability class.
- ✓ The range includes 15 different models with flow rates between 1.280 - 14.640 m³/s and connection diameter options between Ø250 - 710 mm.
- ✓ The electrical connection terminal is extended outside the device with a cable.
- ✓ Belt pulley models are also available.



SNAIL FANS

- ✓ Centrifugal fans have low noise level and high pressure characteristics. They provide space saving thanks to their compact structure. The body is made of die-cast aluminium and is resistant to corrosion and rust.

Areas of Use

- ✓ Fans are generally used in local cooling applications and heating systems, especially in industrial and commercial areas.



AXIAL FANS

- ✓ The outer frame of the wall type axial fans is made of high quality galvanised steel painted with black epoxy-polyester paint protected against corrosion. The blades made of galvanised steel sheet are black polyester painted and sickle shaped. Motor and fan propeller are connected to the main body with steel carriers. The fans with protective wire cage on the suction side have 9 different models with flow rates between 2.870 - 15.710 m³/s and diameter options between Ø355 - 710 mm.

FAN PRODUCTS



DOMESTIC (WC-BATHROOM) FANS

- ✓ Axial fans that can be mounted on the wall or ceiling have automatic louvres. Fans produced by plastic injection method have 4 different models with 80, 100, 180, 280 m³/s flow rate and Ø100, 120, 150 mm diameter.
- ✓ Model no. 100 and 200 have neon light indicator.



SPEED SWITCHES

- ✓ lease contact for speed switches in fan group.

AUXILIARY PRODUCTS



CONTACT ADHESIVE

- ✓ BALDER B 514 is a versatile adhesive whose main ingredient is polychloropene.

Areas of Use

- ✓ It is used for bonding leather, artificial leather, leather, leather sole, rubber sole etc. to each other or to wood and metal, for bonding thermoplastic materials to wood, metal or each other in furniture industry, for bonding thermoset plastics (formica, bakelite etc.) to wood, metal or each other. If used with hardener, high resistance against plasticiser migration is obtained.

Adhesion Properties

- ✓ Operability: immediately after the adhesion process
- ✓ Ultimate Force: Obtained after 8 days.
- ✓ Aging: There is no tendency to harden and become brittle.
- ✓ Heat resistance: Approximately 80°C. If used with hardener, it may exceed 90°C depending on the material.
- ✓ Resistance of adhesive film: aliphatic hydrocarbons, alcohol, water, weak alkalis.

AUXILIARY PRODUCTS



Balder 512

- Foam Rubber - Felt - Tyre - Pvc Surfaces

How to use

- The surfaces to be glued must be dry, free from oil and dust. Spray on the dust-free surfaces with a 1.8 mm nozzle gun and wait 10-15 minutes for drying. Apply adhesive on both surfaces to be glued. If the surfaces are absorbent, 90-100 grams of adhesive should be sprayed on each surface. For non-absorbent surfaces, 60-70 grams of adhesive is sufficient. Since the time to obtain adhesion is very short, adhesion is realised quickly.



ALUMINIUM TAPES

- Solvent or Hotmelt adhesive option is available.
- It is suitable for use in the insulation of high pressure metal alloy ventilation ducts, in areas where heating, cooling and damp proofing are required.
- It is resistant to flame, moisture, all weather conditions, infrared rays, chemicals.
- The reinforced tape shows high resistance to tension in all directions.
- It is suitable for use in the insulation of high pressure metal alloy ventilation ducts, in areas where heating, cooling and damp proofing are required.
- It is resistant to flame, moisture, all weather conditions, infrared rays, chemicals.

AUXILIARY PRODUCTS



PVC TAPES

- ✓ It is a strong tape designed for use in general use areas.

Product Features:

- ✓ It is used for heat and sound insulation in the assembly of polyethylene, rubber pipes and sheets.
- ✓ It provides fast and strong adhesion.
- ✓ Make sure that the surface to be applied is a dry surface free from oil, dust and dirt.
- ✓ For good adhesion, press lightly during application.
- ✓ It can be applied in weather conditions between +10 - +40 degrees.



RUBBER TAPES

- ✓ It is suitable for sealing in ventilation ducts and also for multi-purpose use as edge tape, wick etc. in coolant, white goods and construction sectors.
- ✓ It is usually produced in rolls of 3mm thickness, 5cm- 7,5cm and 10 cm width, 15 m length. It is possible to produce in different thicknesses and sizes upon request.



GASKET

- ✓ EVA tape is used to provide air tightness in ventilation ducts and flange joints.
- ✓ Double-sided tape is laminated on EVA material.
- ✓ It is produced in rolls of 4mm, 5mm thickness and 1,5cm-2 cm width, 10 m length.



MASTIC

- ✓ It is used in expansion joints between prefabricated building elements,
- ✓ In installation of wooden, PVC, iron and aluminium joinery,
- ✓ In the joints of all kinds of joinery, plaster, windowsills and other building materials,
- ✓ At the joints of etherite and aluminium roof and facade plates and all kinds of building materials,
- ✓ before painting against cracks
- ✓ Manufactured in colours such as white, black, grey.

AUXILIARY PRODUCTS



SILICONE

General Purpose Silicone

- ✓ Selsil Acetoxy Silicone is a one-component, moisture curing acetoxy based silicone sealant.
- ✓ Easy to apply.
- ✓ Resistant to UV rays and high temperatures, retains its colour.
- ✓ Resistant against mould after curing.
- ✓ Excellent adhesion to non-porous surface.
- ✓ 280 g x 25 pcs per box
- ✓ Manufactured in white, transparent, grey colours.
- ✓ It is used in general adhesive applications as well as bathroom, kitchen and other sanitary applications.
- ✓ Aluminium, Glass, Glazed ceramic.
- ✓ Shelf life is 12 months.



PLASTIC CLAMPS

- ✓ PVC-based plastic clamps used for connecting flex air ducts to each other and to sheet metal ducts.
- ✓ Up to Ø102 diameter/4,8mmx380mm
- ✓ Up to Ø152 diameter/7,6mmx550mm
- ✓ Up to Ø203 diameter/9mmx710mm
- ✓ Up to Ø254 diameter/9mmx900mm
- ✓ Package quantity is 100 pcs.



EGE YALITIM

SİSTEMLERİ SANAYİ VE TİCARET LİMİTED ŞİRKETİ

Project Based Solutions, Innovative Products

EGE YALITIM SANAYİ VE TİCARET LİMİTED ŞİRKETİ

Cevizli Mah. Savaş Sk. Yılmaz Apt. No:35 A-B Maltepe, İSTANBUL

T. +90 (216) 519 26 93

teklif@egeyalitim.com.tr

| www.egeyalitim.com.tr



Please scan
the QR code for
the digital version
of the catalog.

